

## ims 295 Inkjet Marking System

Superb quality marking from a system that is easy to operate and flexible to use



*The new ims 295 inkjet marking system has an impressive scope of application. It can be used as a fully integrated inkjet in all fully automatic Komax wire processing machines or as an offline inkjet. The new marking head with electromagnetically closeable nozzle is so user friendly and stable in operation and delivers top quality marking at low operating costs.*

**Martin Bossart** Product Manager

### New marking head technology

The ims 295 is equipped with a compact 84kHz/60µm drop generator to ensure top quality marking and reliable operations. The integrated nozzle that can be closed electromagnetically makes the system convenient to operate and has excellent start/stop performance for dye inks and for strongly pigmented inks.



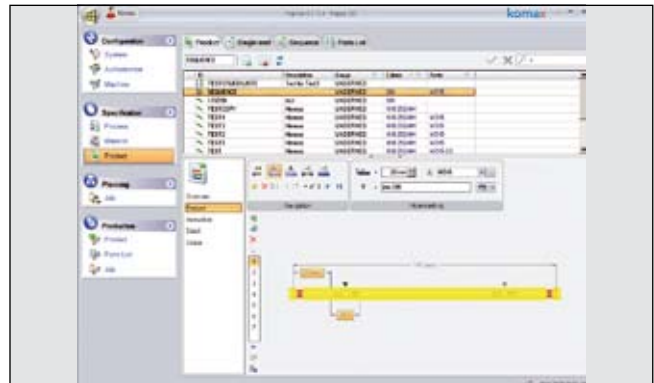
ims 295 BC

### Overview of marker family

The ims marker family delivers a broad range of ink-marking and ink-printing capabilities. The ims 295 BC (Black Color) uses black dye ink and lightly-pigmented inks to mark primarily light-colored wires. The ims 295 MC (Multi Color) for its part uses lightly and strongly pigmented colored inks and dye inks from the extensive selection of inks to mark cables that are dark to light in color. The ims 291 SC is the perfect choice from now on for small marking tasks with a minimum font height of 0.9 mm.

### Area of application

The marker is completely integrated in Komax fully automatic machines and is convenient to set up from the TopWin user interface. For the first time, there are now also functions for your offline marking needs that you can activate from the keyboard and VGA display. The new high performance electronic system, with interface to the Komax machine, is fully compatible with the reliable interface of the predecessor ims 291 inkjet.



TopWin for Kappa



Wire samples being produced on Zeta 633

### YOUR BENEFITS

- > Extremely convenient to operate and service
- > Excellent start/stop performance
- > Highly stable in operation
- > Low operating costs
- > Compelling marking quality
- > Fully integrated in machine software
- > Offline functions